



THORNBRIDGE

AT LONGWOOD

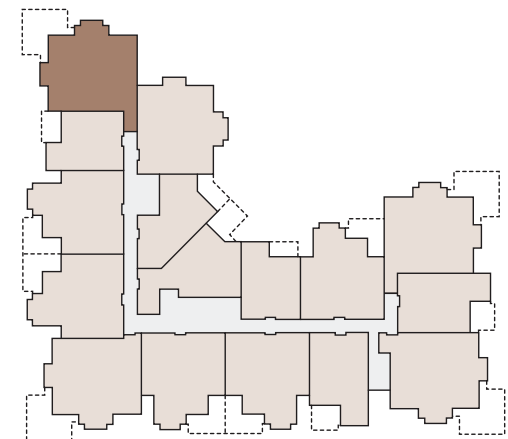


Home Type B

Unit# 104, 204, 304

1206 sq. ft.

2 Bedroom + Den



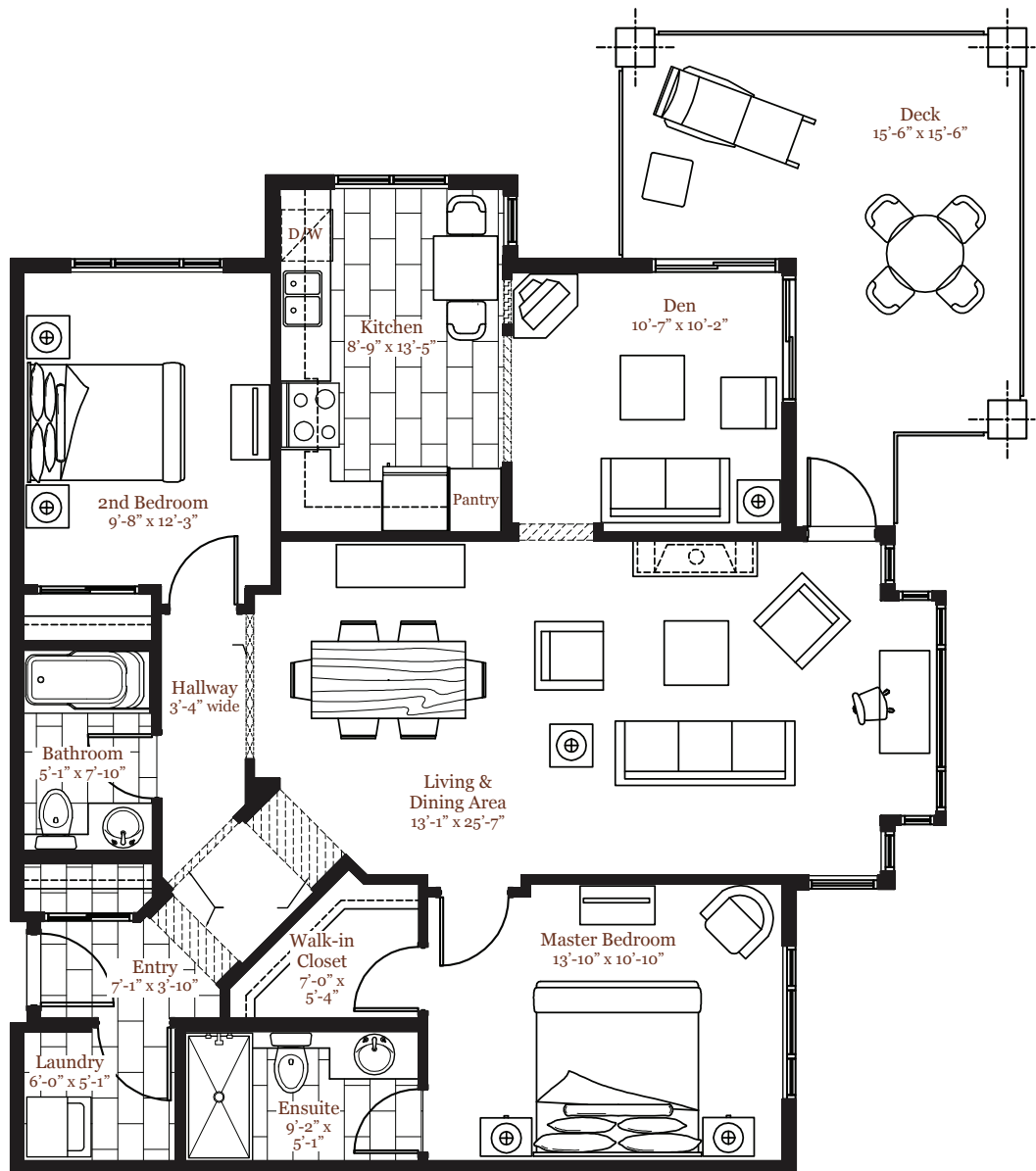
In a continuing effort to maintain the high standards of this development, the developer reserves the right to make modifications and changes to the building design, specifications, features and floor plans as necessary and without notice. Interior square footages and room sizes are based on preliminary measurements and should be considered approximate until final areas can be surveyed. This is not an offering for sale. An offering may only be made by Disclosure Statement.





THORNBRIDGE

AT LONGWOOD

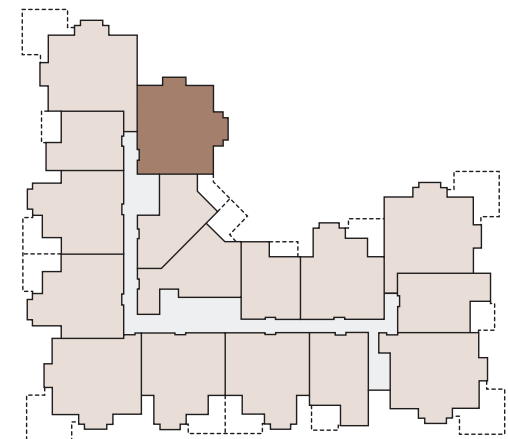


Home Type B

Unit# 103, 203, 303

1152 - 1163 sq. ft.

2 Bedroom + Den



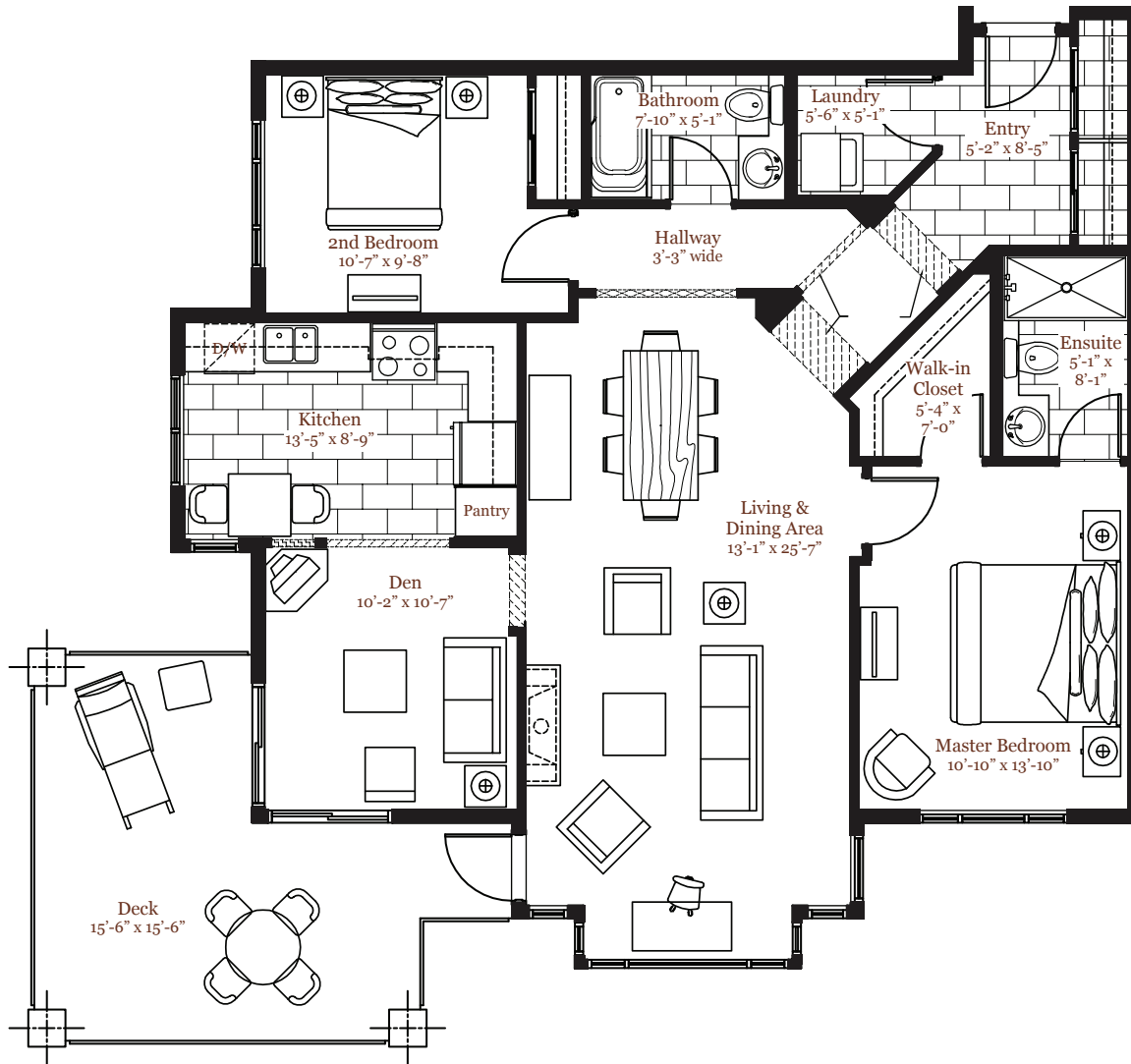
In a continuing effort to maintain the high standards of this development, the developer reserves the right to make modifications and changes to the building design, specifications, features and floor plans as necessary and without notice. Interior square footages and room sizes are based on preliminary measurements and should be considered approximate until final areas can be surveyed. This is not an offering for sale. An offering may only be made by Disclosure Statement.





THORNBRIDGE

AT LONGWOOD

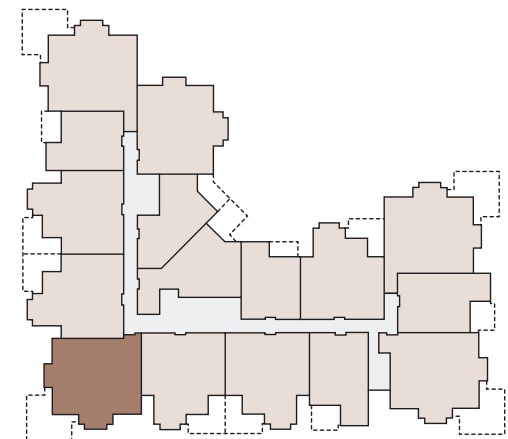


Home Type B

Unit# 108, 208, 308

1173 sq. ft.

2 Bedroom + Den



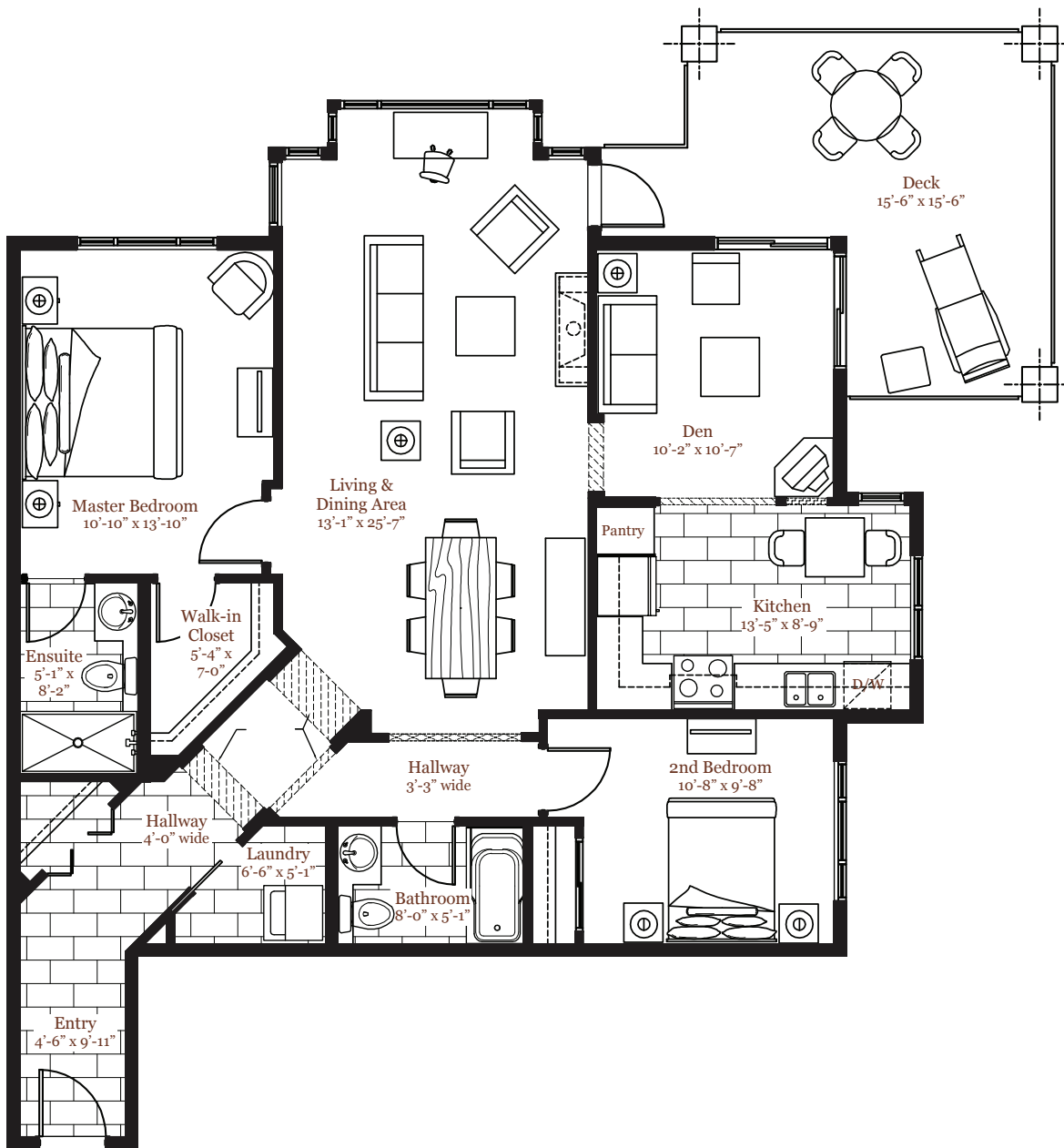
In a continuing effort to maintain the high standards of this development, the developer reserves the right to make modifications and changes to the building design, specifications, features and floor plans as necessary and without notice. Interior square footages and room sizes are based on preliminary measurements and should be considered approximate until final areas can be surveyed. This is not an offering for sale. An offering may only be made by Disclosure Statement.





THORNBRIDGE

AT LONGWOOD

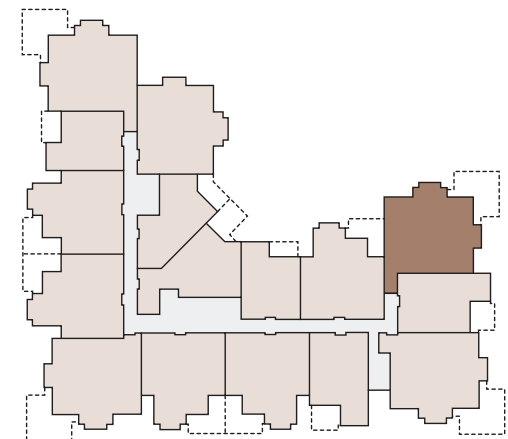


Home Type B

Unit# 114, 214, 314

1206 sq. ft.

2 Bedroom + Den



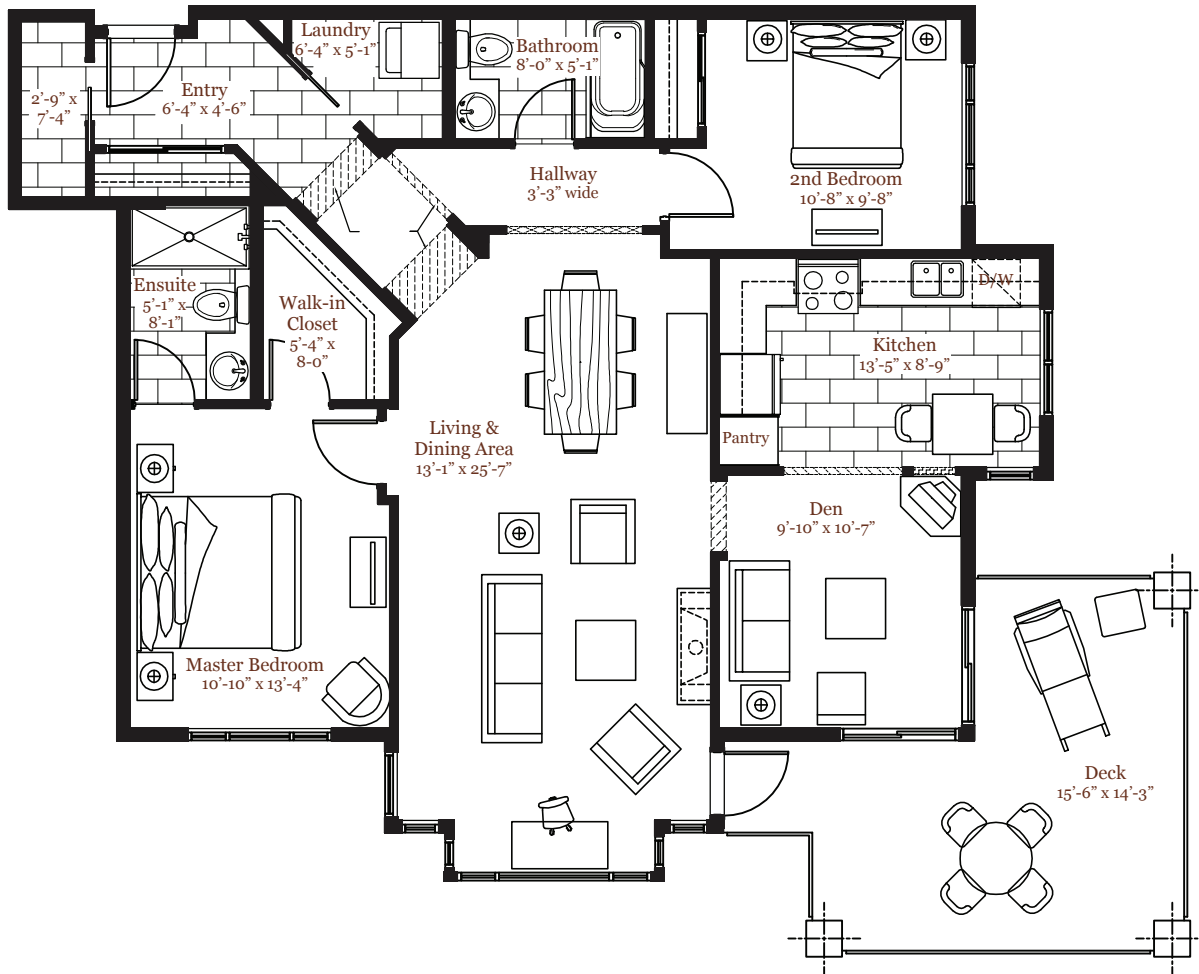
In a continuing effort to maintain the high standards of this development, the developer reserves the right to make modifications and changes to the building design, specifications, features and floor plans as necessary and without notice. Interior square footages and room sizes are based on preliminary measurements and should be considered approximate until final areas can be surveyed. This is not an offering for sale. An offering may only be made by Disclosure Statement.





THORNBRIDGE

AT LONGWOOD

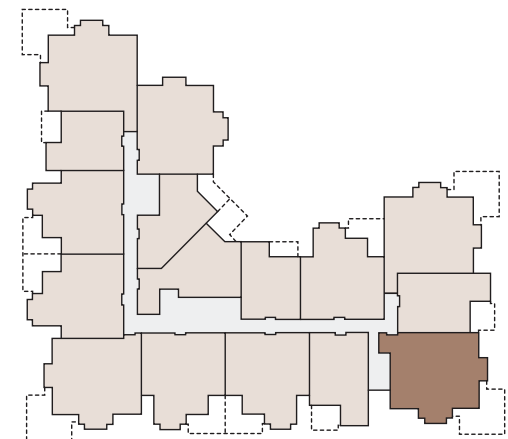


Home Type B

Unit# 112, 212, 312

1195 sq. ft.

2 Bedroom + Den



In a continuing effort to maintain the high standards of this development, the developer reserves the right to make modifications and changes to the building design, specifications, features and floor plans as necessary and without notice. Interior square footages and room sizes are based on preliminary measurements and should be considered approximate until final areas can be surveyed. This is not an offering for sale. An offering may only be made by Disclosure Statement.

